


Global Climate Change Alliance
Support Facility

Module 6

Mainstreaming climate change in national, sector and sub-national policies, strategies and programmes


Training workshops on mainstreaming climate change

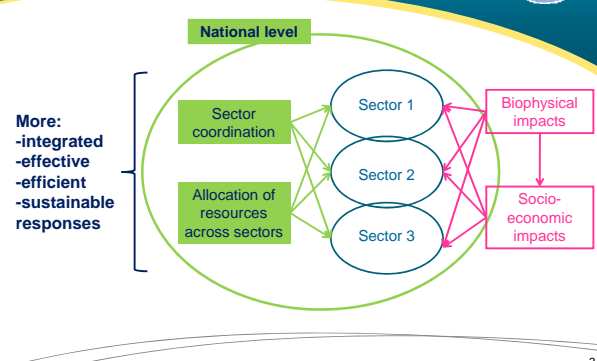


Why mainstream climate change at the national, sector and sub-national levels?

2

Why mainstream climate change at strategic planning levels?





More:
 -integrated
 -effective
 -efficient
 -sustainable responses

National level
 Sector coordination
 Allocation of resources across sectors
 Sector 1
 Sector 2
 Sector 3
 Biophysical impacts
 Socio-economic impacts

3

Why mainstream climate change at strategic planning levels?

National level

- Overall guiding policy framework
- National legislation/regulation
- Exercise of some key functions
- Management of international relations

Sector level

- Operationalisation and implementation of national policies
- Sector-specific legislation/regulation
- Own initiatives, development of capacities & good practices
- Transboundary cooperation on climate-relevant issues

Wider pool of resources

Wider ownership of response

More widespread capacity and institution building

Source: OECD (2009a) 4

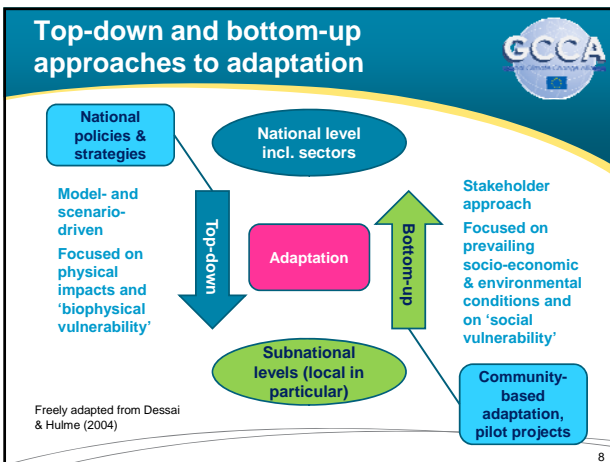
Why mainstream climate change at lower levels of governance?

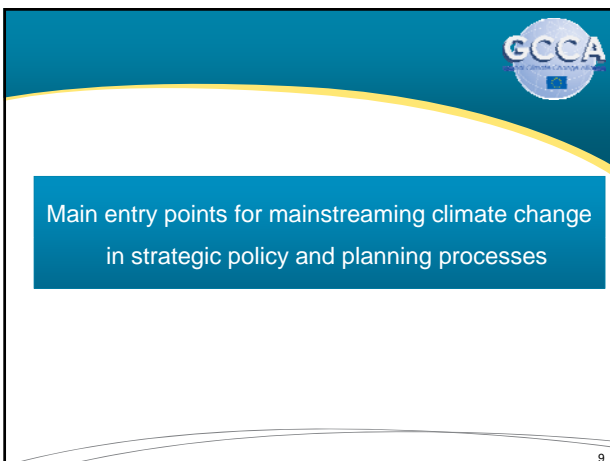
Source: OECD (2009a) 5

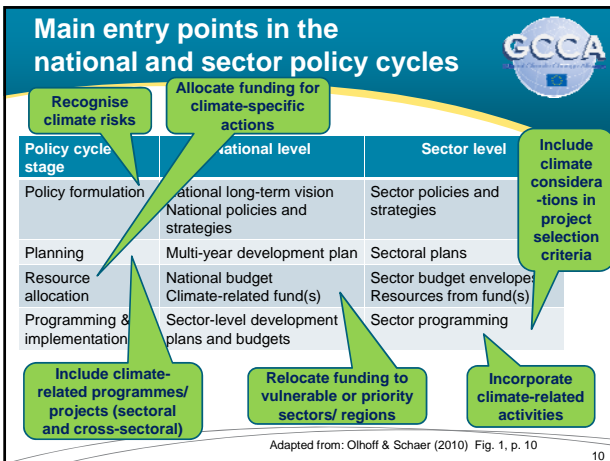
Key stakeholders and cross-level interactions

6

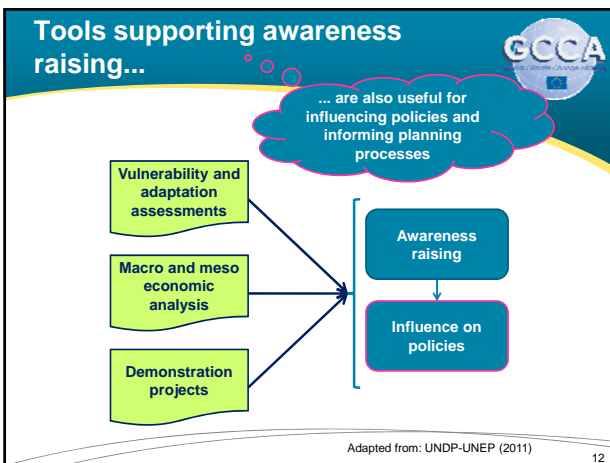













EuropeAid's climate change sector scripts




EC Cooperation:

Responding to climate change

Sector Script for Infrastructure

Information Note




- Agriculture and rural development
- Ecosystems and biodiversity management
- Education
- Energy supply
- Health
- Infrastructure
- Solid waste management
- Trade and investment
- Water supply and sanitation

13



Climate risk screening



- Identifies potential risks for a programme or project by assessing, in its specific context:

Exposure to the effects of CC

Maladaptation risk

Sensitivity to such effects


OPTIONAL:
 Impacts on climate
 (GHG emissions/
 emission removals)

Response & adaptation capacity

- A standard screening questionnaire can be developed to support this exercise

15


Climate risk screening: key factors to consider



- Location
- Sector
- Relationship of the planned intervention to livelihoods
- Socio-economic conditions (current – projected)
- Adaptive capacity of various stakeholder groups
 - Including current coping mechanisms / autonomous adaptation measures
- Lifetime of the considered investments/activities

16

Outcomes of climate risk screening




Vulnerability to the effects of CC	None or low	No specific action, or limited measures
	Medium	Further investigation, adaptation measures
	High	Further investigation, redesign for reduced vulnerability/enhanced adaptive capacity, or even abandonment
Risk of maladaptation	No	No specific action
	Yes	Further investigation, redesign for reduced maladaptation risk, or even abandonment
GHG emissions or emission removals	Insignificant	No specific action, or limited measures
	Significant (*)	Further investigation and enhancement of mitigation potential

(*) in proportion to the size/scope of the intervention

17

Climate risk assessment




- Climate risk assessment (CRA) is a dedicated study aimed at:
 - assessing in further detail the risks identified during climate risk screening
 - identifying possible risk prevention, risk mitigation and other adaptation measures
 - assessing these options
 - formulating concrete recommendations with regard to the design of the programme or project

The assessment of future climate risks should be anchored to an assessment of current risks

18

Strategic environmental assessment (SEA)




- A study:
 - aimed at analysing the environmental consequences of proposed policies/plans/programmes, as well as the main environmental opportunities, risks and constraints to be taken into account
 - for the purpose of promoting more sustainable development

Ensures that environmental considerations are taken into account EARLY in the policy & planning process

19

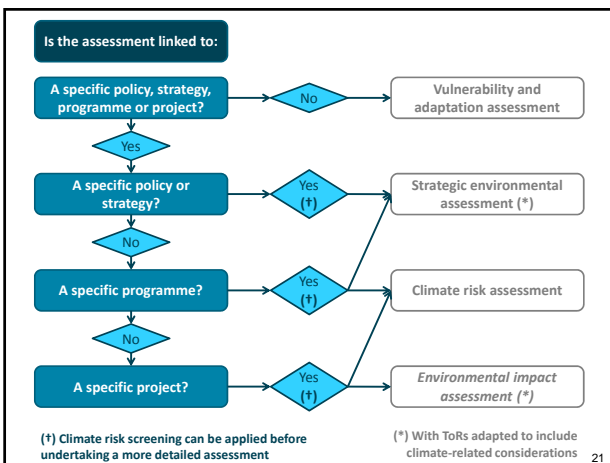
Role of SEA in supporting climate change mainstreaming




- With adequate ToR, SEA can:
 - identify elements of the considered policy or programme that are sensitive to or at risk from climate change
 - identify elements that may result in increased vulnerability to the effects of climate change
 - assess direct and indirect GHG emissions
 - identify options for risk management, adaptation and mitigation
 and make recommendations on alternatives, on institutional aspects, capacity building, etc.

For a model of ToR, see handout or EC *Guidelines on the Integration of Environment & Climate Change* (2009), Annex 5


20





Action planning

22




Turning words into action

Mainstreaming climate change in national and sector policies, strategies and programmes

What can be done and what are the institutional and capacity needs in your organisation?

23



References

- Dessai S. & Hulme M. (2004) Does climate adaptation policy need probabilities? *Climate Policy*, vol. 4 (2) 107-128. Available from: <http://www.mikehulme.org/wp-content/uploads/2007/04/2004-dessai-hulme-probabilities.pdf>
- EC (2009b) *Guidelines on the Integration of Environment and Climate Change in Development Cooperation*. European Commission, Brussels. Available from: http://ec.europa.eu/europeaid/infopoint/publications/europeaid/172a_en.htm
- OECD (2009a) *Integrating Climate Change Adaptation into Development Co-operation: Policy guidance*. OECD Publishing, Paris. [Read-only, browse-it edition] Available from: <http://browse.oecdbookshop.org/oecd/pdfs/browseit/4309171E.PDF>
- Olhoff A. & Schaer C. (2010) *Screening tools and guidelines to support the mainstreaming of climate change adaptation into development assistance: A stocktaking report*. Environment & Energy Group, United Nations Development Programme, New York. Available from: http://www.undp.org/climatechange/library/integrating_cc.shtml
- UNDP-UNEP (2011) *Mainstreaming Adaptation to Climate Change into Development Planning: A Guide for Practitioners*. UNDP-UNEP Poverty-Environment Initiative. Available from: <http://www.unpei.org/knowledge-resources/publications.html>

24
