

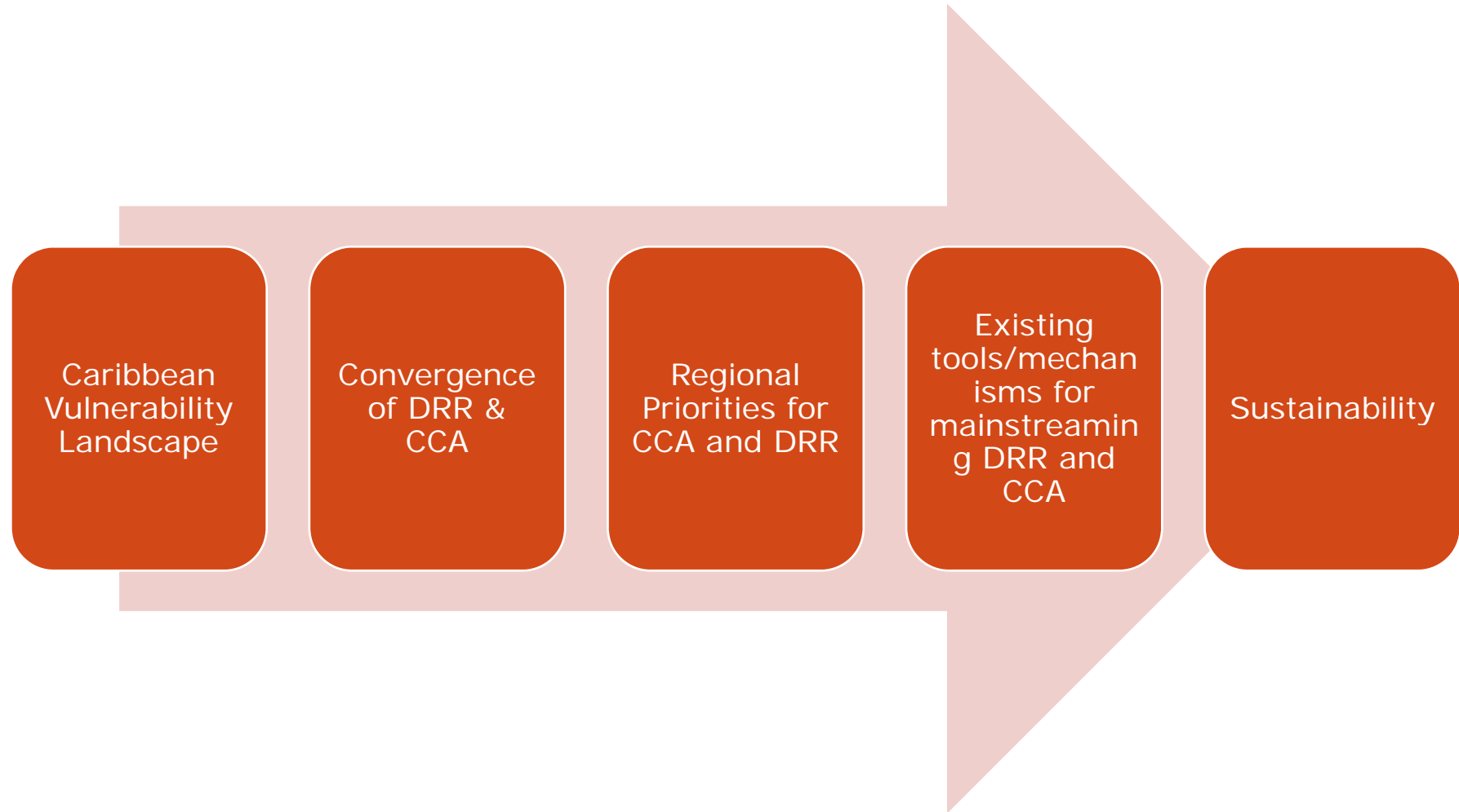
# Priorities for Climate Change Adaptation and Disaster Risk Reduction in the Caribbean Region

Presented by  
Saudia Rahat  
Senior Programme Officer  
CDEMA

***CARIBBEAN REGIONAL CONFERENCE – GLOBAL CLIMATE CHANGE  
ALLIANCE***

***Belize City  
March 28-29, 2011***

# PRESENTATION OVERVIEW



# Climate Change & Natural Hazards

- ▶ The IPCC Fourth Assessment Report concluded that **climate change** is now a **certainty**, and that it has begun to affect the **frequency, intensity, and length of many climate-related hazard events, such as floods, droughts, storms and extreme temperatures**, thus increasing the need for additional timely and effective **adaptation**.



Severe Weather Event  
St. Vincent & the Grenadines, 2008



Flood Event – Trinidad  
August 2008



Hurricane Lenny,  
Palmiste, Grenada, 1999

# The Caribbean Vulnerability Reality



Major Hurricanes by Decade (1970-2005)

CATEGORY	1970-79	1980-89	1990-99	2000-05
3	9	7	11	6
4	3	7	12	8
5	3	3	2	7
TOTAL	15	17	25	21

# The Caribbean Vulnerability Reality

Caribbean region is very vulnerable due to our geographic location and socio-economic characteristics



More intense and frequent hydro meteorological hazards will pose a growing threat to sustainable development:

- destroying infrastructure and productive capacity,
- interrupting economic activity
- creating sometimes irreversible changes in the natural resource base.
- national security issues

# Convergence of CCA and DRR

CCA and DRR converge in relation to **climate hazards**

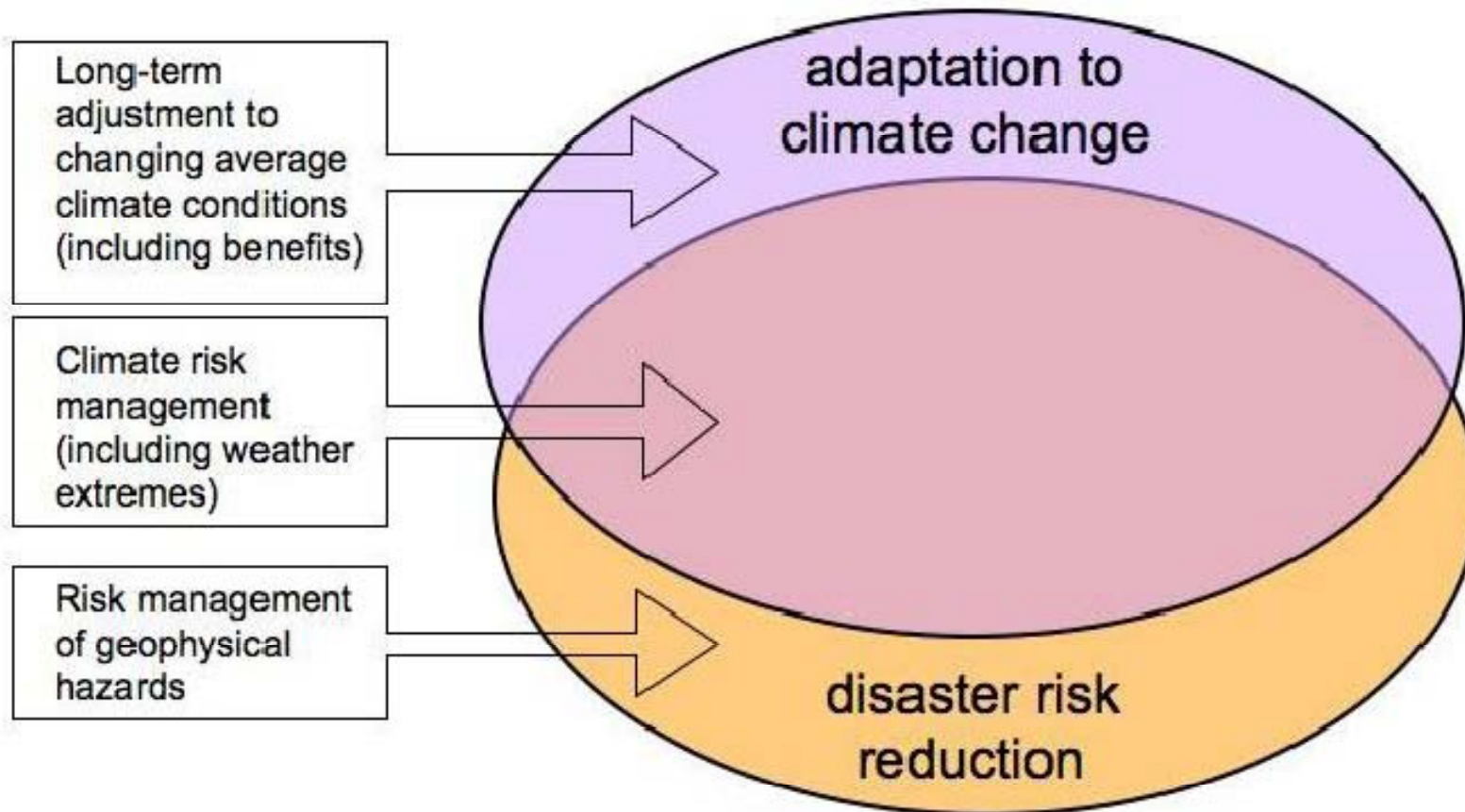
- The desired outcome of both disciplines is risk reduction
- DRR is concerned primarily with risks from present climate variability, geographically and related extremes
- CCA is primarily more focused upon increasing extremes of climate events and the future changes in those risks

Both CCA and DRR require **similar information systems, skills, and institutional arrangements.**

- Measures to reduce vulnerability and disaster risk are proven and are already being applied to adaptation.

Source: GFDRR, World Bank, 2009; Briefing Note, ISDR , 2009

# Convergence of CCA and DRR



# PRIORITIES FOR CCA & DRR

# Regional Policy Frameworks for CCA and DRR

- Two policy frameworks define CARICOM's priorities:
  1. Regional Framework for Achieving Development Resilient to Climate Change 2009-2015 (CCCCC)
  2. Enhanced Comprehensive Disaster Management Strategy and Programming Framework 2007-2012 (CDEMA)

# Regional Framework for Achieving Development Resilient to Climate Change (2009-2015)

## VISION

Building Regional Resilience to a Changing Climate

## Objective

To establish direction and to continue to reduce vulnerability in the region and build resilience to the impacts of GCC.

### Strategic Element 1:

Mainstream CCA *strategies* into the *sustainable dev. agendas*

### Strategic Element 2:

Promote the *implementation of specific adaptation measures* to address key vulnerabilities

### Strategic Element 3:

Promote *actions to reduce the vulnerability of natural and human systems*

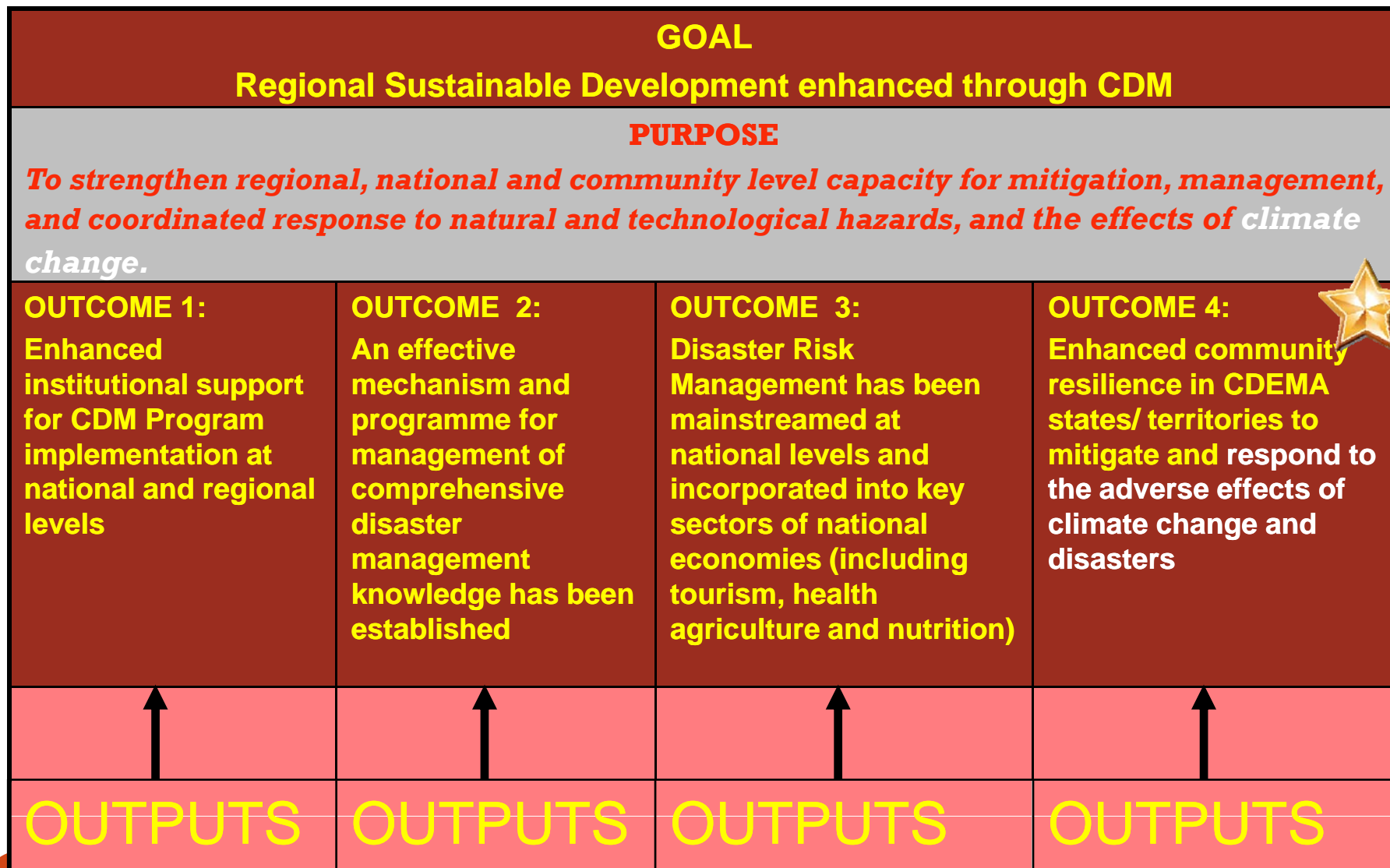
### Strategic Element 4:

Promote *actions to reduce greenhouse gas emissions*

### Strategic Element 5:

Promote actions to derive social, economic and environmental *benefits from the prudent management of standing forests*

# Enhanced CDM Strategic Framework (2007-2012)



# *The Model Programme and Plan of Action for CCA and DRR*

*“Blue print for national level integration of climate change adaptation  
and disaster risk reduction”*

# Development of the CCA and DRR Programme and POA

A Climate Change Disaster Management Working Group (CCDM-WG) was established to guide the development of the programme and plan of action

Gap Analysis

# Priorities for CCA and DRR

***Strengthen*** institutional and governance structures at the national and regional levels

- Strengthen linkages for multi-stakeholder coordination and collaboration at the national and regional levels
- Strengthening dialogue among CCA & DRR stakeholders

***Promote*** the development and implementation of legislation, standards and guidelines for CCA & DRR.

- Regional standards for hazard mapping and risk assessments
- Regional guidelines for CCA & DRR for building and infrastructure design

***Build*** capacity amongst planning, national/ local emergency organisations on CCA & DRR.

- Revisit response requirements for emergency operations and upscale response and deployment capacities
- Strengthen tools to support mainstreaming of CCA & DRR into EIAs, NHIA and planning processes
- Strengthen knowledge and awareness of National Disaster Organizations with respect to CCA

# Priorities for CCA and DRR

***Establish and maintain*** information sharing mechanisms for improved accessibility to consolidated data, information and products on hazards, vulnerability and risks related to CCA & DRR.

- Develop redundant systems for storage CCA & DRR data eg. hazard and risk assessment databases
- Establish effective information sharing mechanisms supported by policy and standards

***Develop*** communication strategies on climate change adaptation and disaster risk reduction which are synchronized, and targeted at all groups.

- Communication strategies should be driven by end users and should be focused on desired attitudinal changes

***Promote*** education, training and research for informing the implementation of CCA & DRR programmes.

- Establish standardized training programmes for the region that is accessible online
- Documentation of best practices across sectors for CCA & DRR
- Expand the utility of remote sensing in DRR and radars for real time flood forecasting
- Establish policies and guidelines for promoting the use of outputs of downscaled climate models in plans and policies.

# Priority Areas Linkages to the CDM and CC Strategies

PRIORITY AREAS	CDM STRATEGY	CC STRATEGY
Strengthen institutional structure and governance	OUTCOME 1, 3	SE 1
Promote the development and implementation of legislation, standards and guidelines	OUTCOME 1, 4	SE 1
Build capacity	OUTCOME 1,3	SE 1
Establish and maintain information sharing mechanisms	OUTCOME 2	SE 2
Develop communication strategies	OUTCOME 2	SE 1
Promote, education training and research	OUTCOME 2	SE 1

# Tools/Mechanisms for Mainstreaming CCA and DRR

- The Climate Change Disaster Management Working Group (CCDM-WG), which provides technical guidance to the Mainstreaming of Climate Change into Disaster Risk Management
- A model programme and action plan for integrating CCA and DRR into national agendas
- Model Community Preparedness Handbook on Climate Change and Disaster Risk Management – *cadre of 25 trainers exist in the region*
- The Regional Disaster Risk Management Strategy for the Tourism Sector to be reviewed to include more explicitly, aspects of CC as appropriate
- Model National CDM Policy to be articulated for CDEMA PS, which will incorporate CC to ensure vulnerabilities to hydro-meteorological hazards are comprehensively addressed

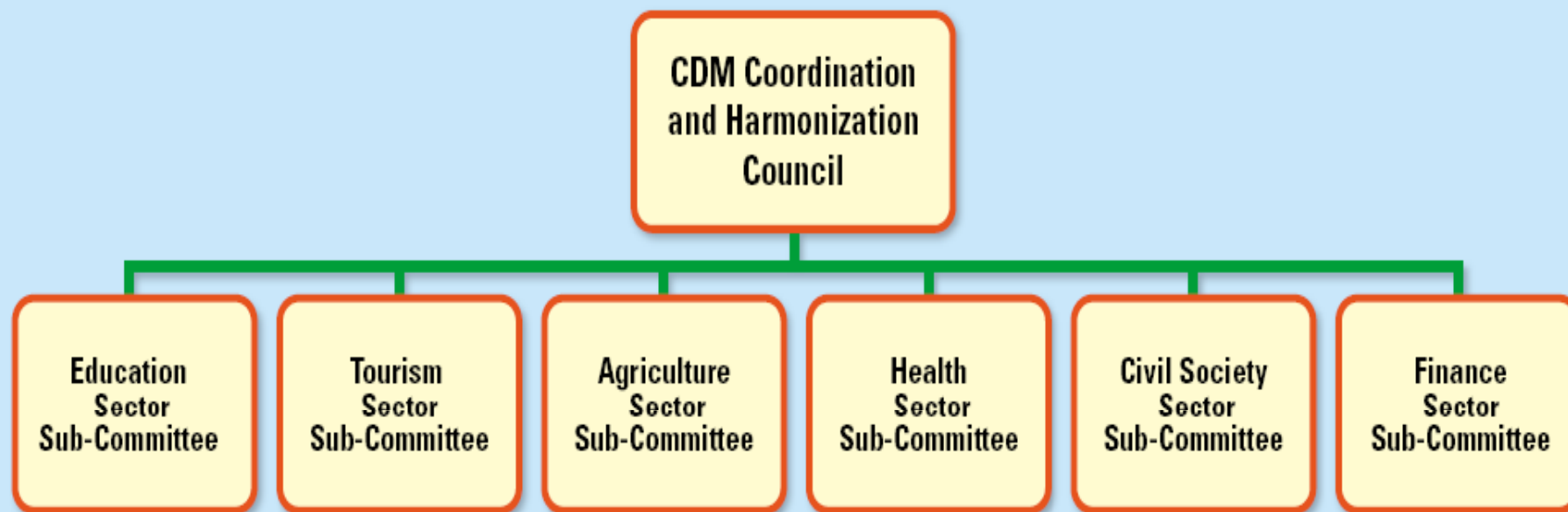
# Sustainability for CCA & DRR

- Consolidation of regional strategies to rationalize initiatives, minimize risks of inefficient planning, dispersion and duplication of plans/frameworks.
- Allocation of resources for tangible & sustainable community interventions
- Partnerships - *Cooperation and partnership building amongst community focused organisations*
- Advance joint initiatives on adaptation and DRR planning with a multi sectoral, development based approach and centralised oversight responsibility
- Build awareness and understanding

# Sustainability for CCA & DRR

- Utilize existing regional and national mechanisms to maximize opportunities for mainstreaming:
  - **National Disaster Management Governance Structures** – *Is the Climate Change Focal Point represented ?*
  - **National Climate Change Committees** – *is the national disaster coordinator represented ?*
  - **The CDM Governance Mechanism** – *will provide a conduit for implementation of the regional CCA and DRR initiatives*

## Compostion of the CDM Governance mechanism



[Back](#)

# Thank You!

**Contact:**

**Caribbean Disaster Emergency Management Agency (CDEMA)**

Building #1 Manor Lodge Complex, Lodge Hill

St. Michael, Barbados

**Tel.:** 246-425-0386

**Fax:** 246-425-8854

**Email:** [saudia.rahata@cdema.org](mailto:saudia.rahata@cdema.org)

[jeremy.collymore@cdema.org](mailto:jeremy.collymore@cdema.org)