

Centre d'appui de l'Alliance mondiale contre le changement climatique

Modèle 10

Synthèse, conclusions et actions ultérieures

Ateliers de formation sur l'intégration du changement climatique

---

---

---

---

---

---

---

---

Récapitulatif du cadre et des outils

---

---

---

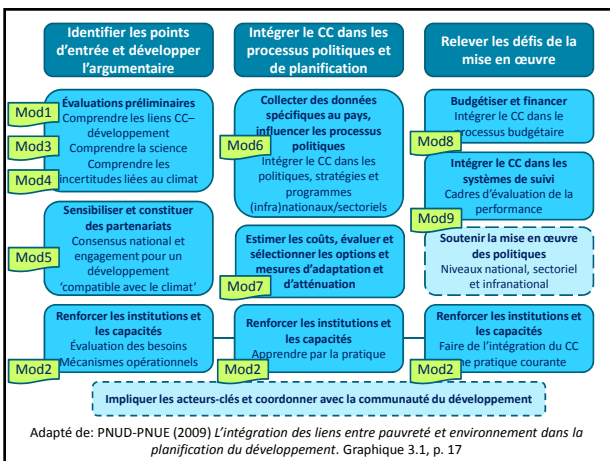
---

---

---

---

---




---

---

---

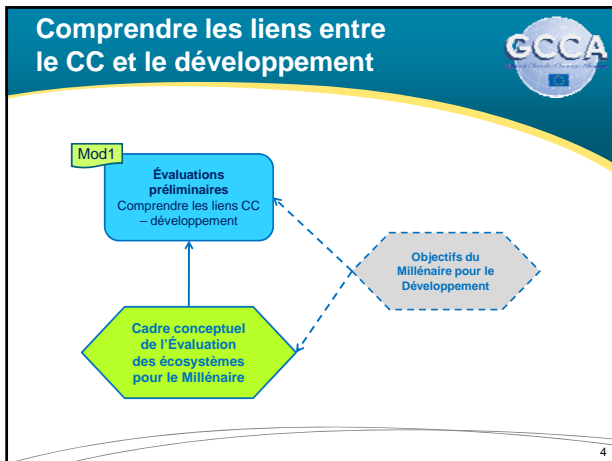
---

---

---

---

---




---

---

---

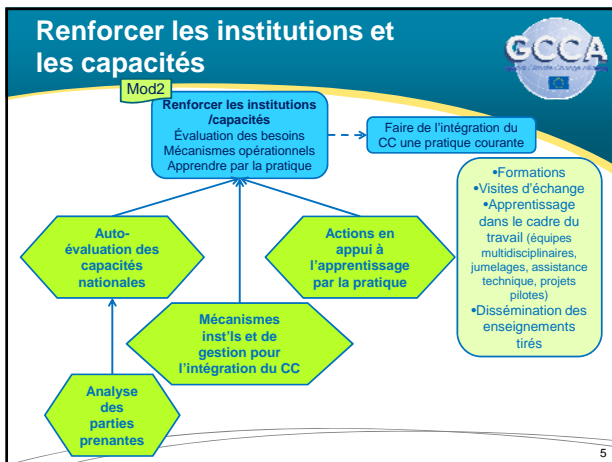
---

---

---

---

---




---

---

---

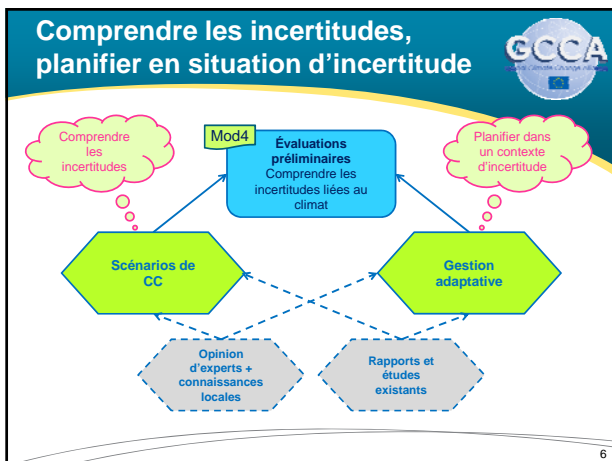
---

---

---

---

---




---

---

---

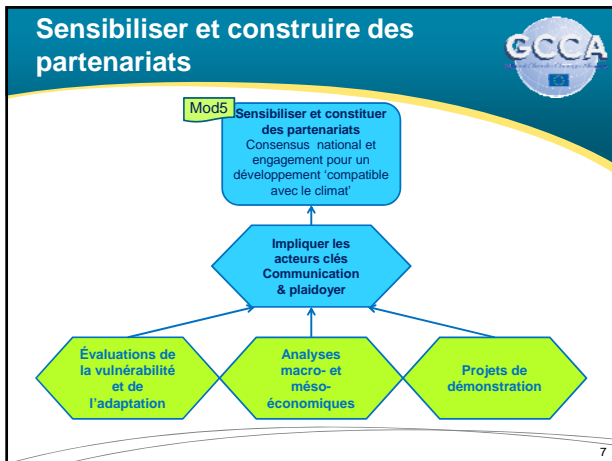
---

---

---

---

---




---

---

---

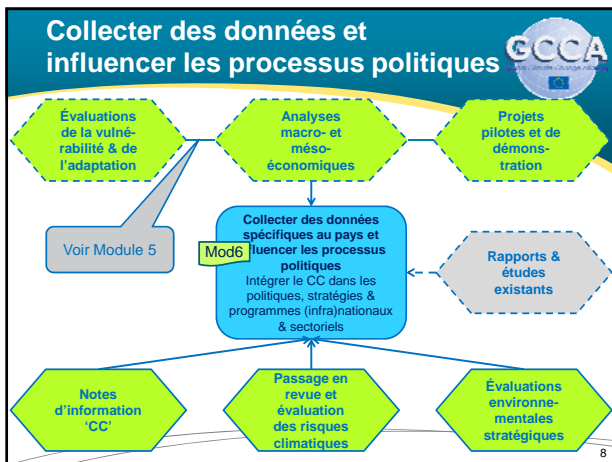
---

---

---

---

---




---

---

---

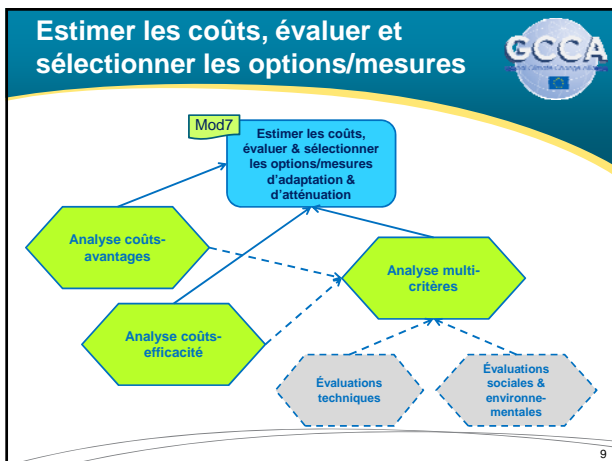
---

---

---

---

---




---

---

---

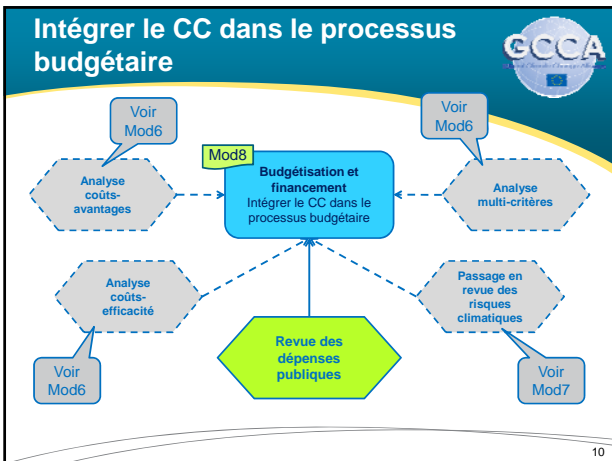
---

---

---

---

---




---

---

---

---

---

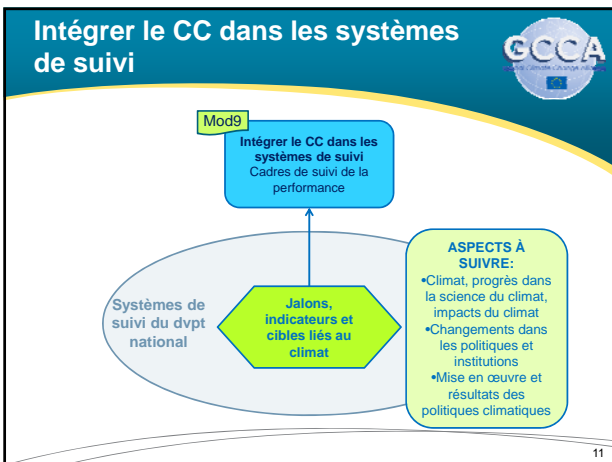
---

---

---

---

---




---

---

---

---

---

---

---

---

---

---

### Conclusions

12

---

---

---

---

---

---

---

---

---

---

CCCA

Actions ultérieures envisagées  
pour donner suite à l'atelier

13

---

---

---

---

---

---

---

---

CCCA

Évaluation de l'atelier

14

---

---

---

---

---

---

---

---

Références

CCCA

- PNUD-PNUE (2009) *L'intégration des liens entre pauvreté et environnement dans la planification du développement : Manuel de bonnes pratiques*. Initiative Pauvreté-Environnement du PNUD-PNUE. Téléchargeable sur : <http://www.unpei.org/knowledge-resources/publications.html>

15

---

---

---

---

---

---

---

---